



IDEAL NETWORKS

LanTEK® III LAN Cable Certifier

Quick Reference Guide
Modular Plug Terminated Links
(MPTL)



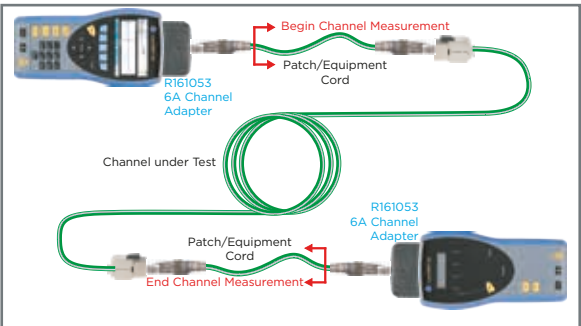
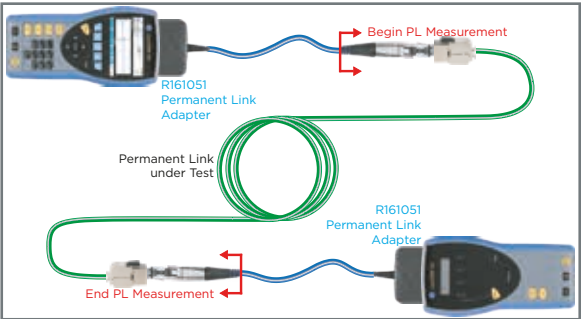
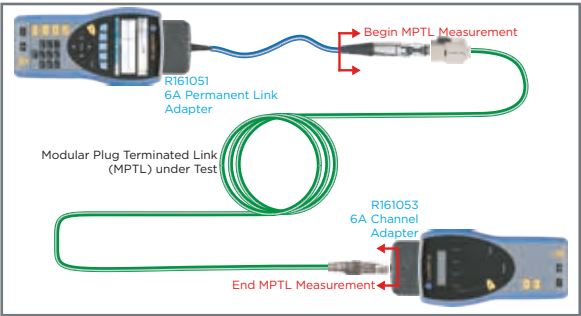
Proof of Performance

Modular Plug Terminated Links (MPTL)

An MPTL is a cabling link that is terminated with a socket (female) at one end and a plug (male) at the other. An MPTL consists of up to 90 meters (295 ft) of horizontal network cabling. The MPTL is used to certify the horizontal network cabling that plugs directly into network devices such as CCTV cameras, Wi-Fi access points, access control and IoT devices.

MPTL certification with LanTEK III requires the R161051 cat 6A PL adapter at the main handset and the R161053 cat 6A channel adapter attached to the remote handset.

MPTL certification is available for cat 6A/class E_A links only.



Requirements

- LanTEK III software version 3.200 or higher
- Permanent Link adapter #R161051 attached to Main Handset
- Channel adapter #R161053 attached to Remote Handset

MPTL Configuration

Included in measurement:

- Connection between permanent link adapter and MPTL cabling.
- Connection between MPTL cabling and channel adapter.

Not included in measurement:

- Cord of the permanent link adapter.

Channel adapter P/N R161053 required for MPTL testing.

Permanent Link Configuration

Included in measurement:

- Connection between permanent link adapter and permanent link cabling.

Not included in measurement:

- Cord of the permanent link adapters.

Channel Configuration

Included in measurement:

- Cord (wire) of patch cables.
- Connection between patch cord and permanent link cabling.

Not included in measurement:

- Connection between patch cord and channel adapters.

Setup: Configuring MPTL tests

1. Connect the PL adapter to the main handset and channel adapter to the remote.

Highlight the copper test icon and press ENTER.

Note: Current test standard shown in red circle.



2. Highlight TIA or ISO and press ENTER.



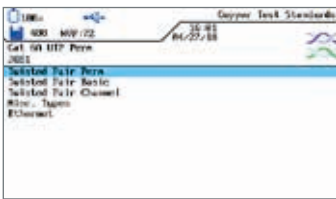
ISO application note

MPTL is not currently specified by ISO, though a task group in ISO/IEC-SC25/Working Group 3 is working to specify MPTL.

ISO and TIA actively work to make new specifications common. Due to customer demand, and the expectation that ISO will adopt MPTL, it has been added to LanTEK version 3.200 software.

Use the TIA cat 6A MPTL selection if testing MPTL cabling configurations to a current standard document is required.

3. Highlight Twisted Pair Perm and press ENTER.



4a (TIA). Highlight Cat 6A MPTL (UTP or STP) and press ENTER.

4b (ISO). Highlight ISO Ea PL2/PL3 MPTL (UTP or STP) and press ENTER.



5. Enter a known NVP value for the cable and press ENTER; or press F3 (Meas NVP) to calculate the NVP for a known length of cable.



6. MPTL is configured and ready to test. The current test standard line will update to display the newly selected standard.



TIA application note

MPTL is defined in the ANSI/TIA-568.2-D standard that was not ratified when LanTEK software version 3.200 was released.

The pass/fail criterion for MPTL is identical to the Permanent Link test limits. While there is no expectation that the specifications for MPTL will change; version 3.200 is testing to a draft standard.

IDEAL INDUSTRIES Networks Ltd.
Stokenchurch House, Oxford Road
Stokenchurch, HP14 3SX
High Wycombe, United Kingdom

www.idealnetworks.net

Publication no.: 161847, Rev. 1

© 2018 IDEAL INDUSTRIES Networks Ltd. All Rights Reserved.
LanTEK, IDEAL and the IDEAL NETWORKS logo
are trademarks or registered trademarks of
IDEAL INDUSTRIES INC.

A subsidiary of IDEAL INDUSTRIES INC.



IDEAL INDUSTRIES, INC.